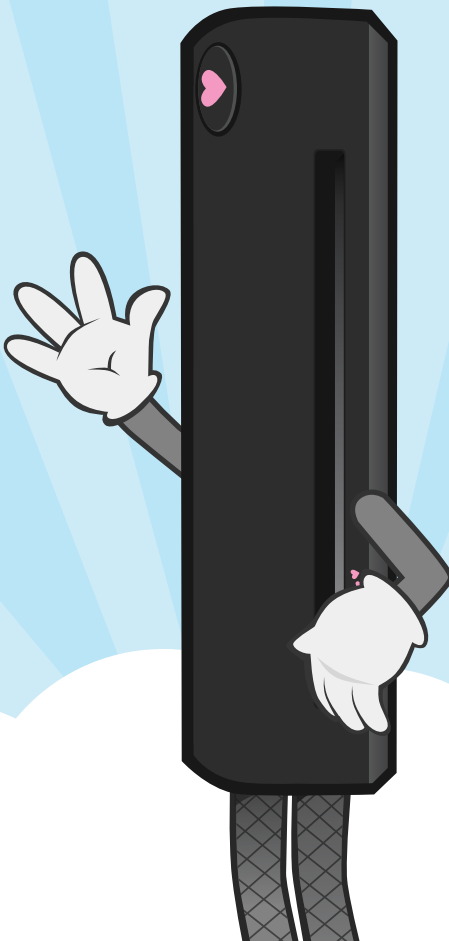


doxie

QUICK START GUIDE



1. Limited Warranty

(a) DOXIE HARDWARE. APPARENT CORPORATION warrants this Doxie Document Scanner ("Doxie Hardware") against defects in material and workmanship under normal use and service for 1 year from the original date of purchase. APPARENT CORPORATION, at its option, shall repair or replace the defective Doxie Hardware covered by this warranty. Please retain dated sales information as evidence of the date of purchase. You will need it, along with a Return Authorization Number (RMA) for any warranty service.

In order to keep the Warranty in effect for the Doxie Hardware, the Doxie Hardware must have been handled and used as prescribed in the instructions included with the Doxie Hardware. THIS WARRANTY DOES NOT COVER ANY DAMAGE DUE TO ACCIDENT, MISUSE, ABUSE, OR NEGLIGENCE. THIS WARRANTY IS ONLY VALID IF THIS DOXIE HARDWARE IS USED WITH THE COMPUTER, SYSTEM, AND HARDWARE/SOFTWARE IDENTIFIED ON THE BOX, INSTRUCTIONS, OR ACCOMPANYING DOCUMENTS. (Please check product information, documents, or contact technical support for more information).

Repair or replacement, as provided under this warranty, is your exclusive remedy arising out of defective Doxie Hardware. APPARENT CORPORATION shall not be liable for incidental or consequential damages. Implied warranties of merchantability and fitness for a particular purpose for this Doxie Hardware are limited in duration to the duration of this warranty. It is your responsibility to deliver returned product to Apparent's designated RMA processing center.

DOXIE SOFTWARE. ALL DOXIE SOFTWARE AVAILABLE TO YOU IS PROVIDED "AS IS" WITHOUT WARRANTY OF ANY KIND, EITHER EXPRESSED OR IMPLIED, INCLUDING, BUT NOT LIMITED TO, THE IMPLIED WARRANTIES OF MERCHANTABILITY AND FITNESS FOR A PARTICULAR PURPOSE. THE ENTIRE RISK AS TO THE QUALITY AND PERFORMANCE OF THE SOFTWARE IS WITH YOU.

(b) APPARENT CORPORATION OR ANY OF ITS SUBSIDIARIES AND AFFILIATES DO NOT WARRANT THAT THE FUNCTIONS CONTAINED IN THE SOFTWARE WILL MEET YOUR REQUIREMENTS OR THAT THE OPERATION OF THE SOFTWARE WILL BE UNINTERRUPTED OR ERROR FREE. ALL DOXIE SOFTWARE, ITS FEATURES, FUNCTIONALITY, AND UPGRADES (WHEN AVAILABLE) ARE SUBJECT TO CHANGE WITHOUT NOTIFICATION TO YOU, INCLUDING THE POSSIBILITY OF THE ELIMINATION OF CERTAIN FEATURES AND FUNCTIONS.

2. Limited Remedies

IN NO EVENT WILL APPARENT CORPORATION OR ANY OF ITS SUBSIDIARIES OR AFFILIATES BE LIABLE TO YOU FOR ANY DAMAGES, INCLUDING ANY LOST PROFITS, LOST SAVINGS, OR OTHER INCIDENTAL OR CONSEQUENTIAL DAMAGES ARISING OUT OF THE USE OR INABILITY TO USE THE DOXIE HARDWARE OR DOXIE SOFTWARE EVEN IF APPARENT CORPORATION HAS BEEN ADVISED OF THE POSSIBILITY OF SUCH DAMAGES OR FOR ANY CLAIM BY ANY OTHER PARTY.

EC Declaration of Conformity

Manufacturer:
Apparent Corporation
121 Dry Avenue, Cary, NC 27511
United States of America

Product:
Model: DX100
Name: Doxie
Description: Document scanner

Declaration:
Apparent Corporation declares that the aforementioned equipment is in conformity with the directives set out by:

Directive 2004/108/EC Electromagnetic Compatibility

The following standards were applied for evaluation of this product:

EN 55022:2010
EN 55024:2010

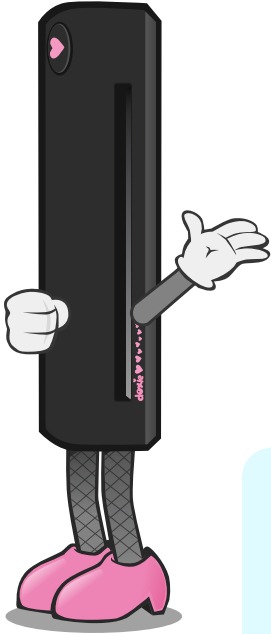
Issuer:
Apparent Corporation
a United States corporation
May 29th, 2012

/Travis J. Hicks/

Travis J. Hicks
Chief Operating Officer
Apparent Corporation

Doxie: Part # DX100, UPC # 662425018222. © 2012 Apparent Corporation.
Doxie is our registered trademark. Other trademarks are the property of their respective owners – no endorsements by third-party trademark holders are implied. Revision 2012-06.

Welcome!



Thanks for purchasing Doxie, the amazing scanner for documents. Doxie makes scanning and sharing paper easy – just put your document or photo in Doxie's slot, push the button, and you'll have a crisp, clean scan in no time. Doxie makes it easy to save, send, or share your digitized paper with others.

What's in the box?

- Doxie ultra-portable paper scanner
- USB cable
- Quick Start Guide (this booklet)
- Carrying case
- Cleaning and calibration sheets
- Photo scanning sleeves (for glossy photos)

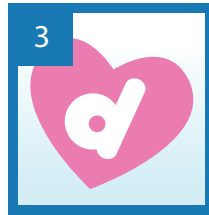
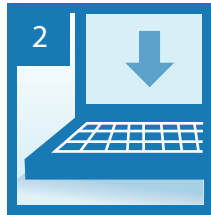
Setting Up Doxie

Your First Time with Doxie

Getting Doxie ready to go is easy. First, you need Doxie's companion app for your Mac or PC, available for download here:

<http://www.getdoxie.com/start>

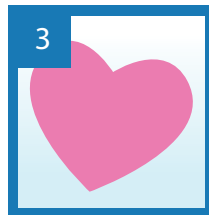
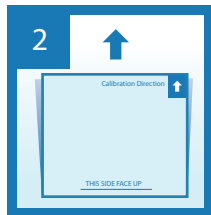
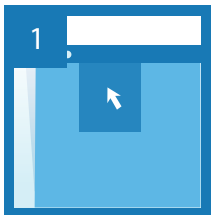
Follow the on-screen directions to get started. To set up Doxie:



1. Unplug the scanner if you've plugged it in already.
2. Download and install the Doxie app at: <http://www.getdoxie.com/start>
3. Launch the Doxie app.
4. When prompted by the installer or Doxie app, connect the scanner to your computer's USB port. Connect Doxie directly to your computer or a powered USB hub only; never connect Doxie to an unpowered USB hub (like the one built into USB keyboards).

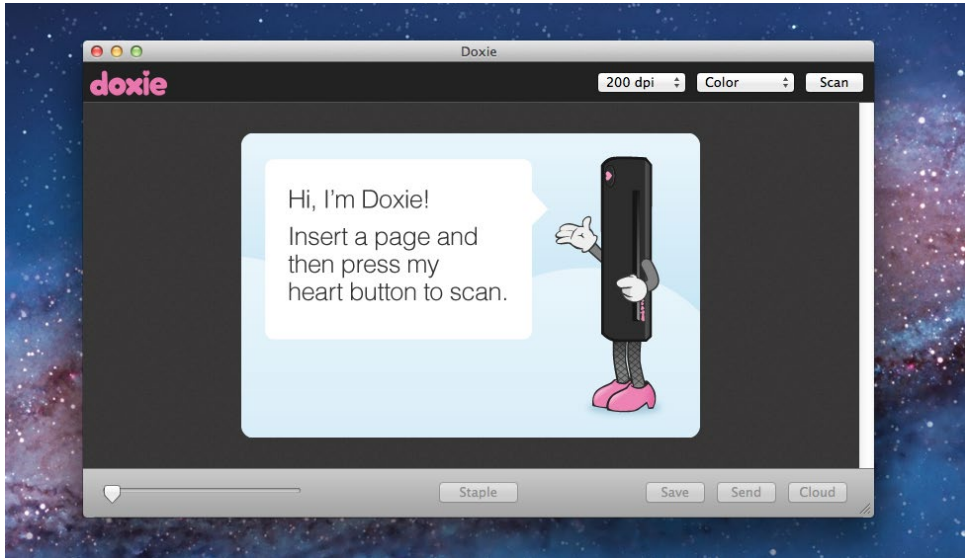
Calibrating Doxie

Doxie needs to be calibrated before you start scanning. You'll be prompted to calibrate the first time you set up the Doxie app. In the future, you can calibrate by selecting Doxie > Calibrate Doxie from the menu bar.

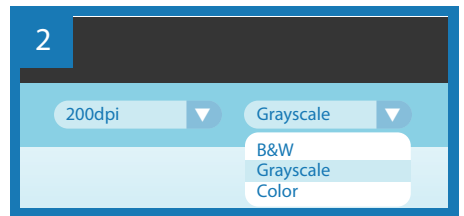
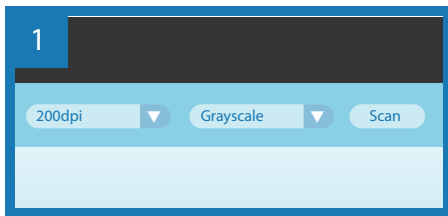


1. Select Doxie > Calibrate Doxie from the menu bar.
2. Insert the calibration sheet face down. If unavailable, use a blank sheet of paper.
3. Push Doxie's heart button to start automatic calibration.

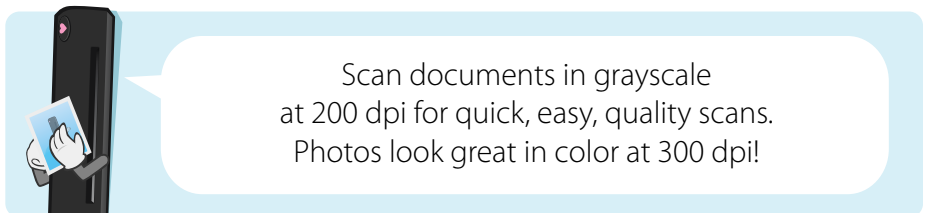
Starting Up



Connect Doxie and launch the Doxie app to display the main Doxie window.

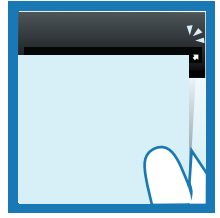
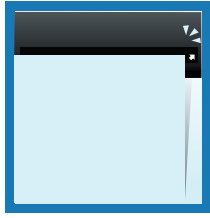
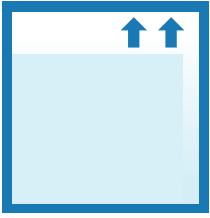


1. When Doxie is connected, you'll see the Doxie scanning bar at the top of the window.
2. Choose your scanning resolution and color mode. Resolution is a measure of the quality of your scan; higher resolutions will increase image quality but will result in slower scanning speeds and much larger files.



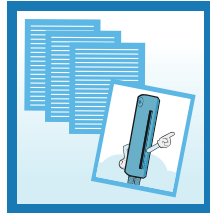
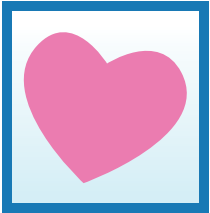
Scanning with Doxie

Inserting Paper



- When inserting your paper in Doxie's slot, put it in face down, straight, and aligned to the right – follow the arrow printed on Doxie's slot.
- Doxie grabs your paper automatically using a feature called prefeeding. By prefeeding Doxie can ensure proper alignment of your paper while feeding your paper through with its internal rollers.
- Insert paper quickly until it stops and hold it in until Doxie grabs the paper. If you hear Doxie prefeed before you've fully inserted the paper, remove the paper and try again.
- When Doxie successfully grabs your sheet you know you're ready to scan.

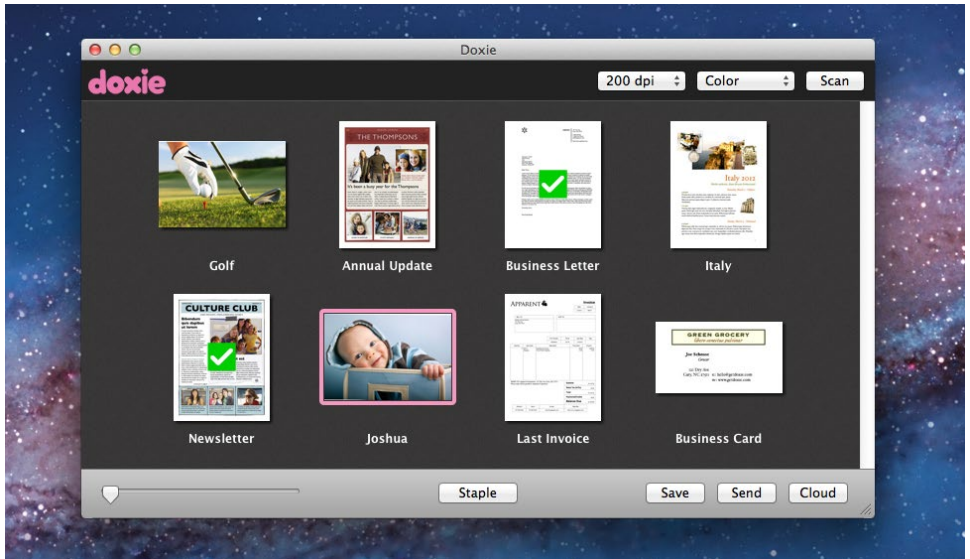
Start Your Scan



- Push Doxie's heart button to begin scanning.
- After Doxie finishes scanning the page, repeat the scan process until you've scanned all your documents.
- Scan related or unrelated sheets – you can reorder and organize them after scanning in the Doxie app.

After the Scan

Your Scanned Paper



- The main window of the Doxie app shows your scanned documents and photos. The app automatically crops and straightens your scans.
- To create a multi-page document, select multiple scans by holding the command key (Mac) or control key (PC), then click Staple to group the selected scans into a stack. Scans are stapled in the order they appear in the window.
- Reorganize scans by dragging and dropping.
- The bottom bar allows you to save, send, or upload to the cloud.
- Scans have basic adjustment options. These options are automatically set, but you might want to tweak the settings. To manually adjust an image, double click the desired scan.

Save and Send

Saving Locally

Once you're ready to save, the Save button on the bottom bar allows you to store scans on your computer or an external drive.



1. Select scan(s) and click the Save button. You can then choose a file format (see table below for a list of available formats).
2. Select a destination. Your destination can be any folder you choose on your computer.
3. Click Save, and your scan will be shown as saved (with a green checkmark).

| Format | Description |
|--------|--|
| PDF | The industry standard file format for documents. Use PDFs with Preview (Mac) or Adobe Acrobat (PC). |
| JPEG | A compressed image format for photos, commonly used by digital cameras. |
| PNG | A lossless image format for graphics. Use PNG if you want to retain the full quality of the image for editing. |

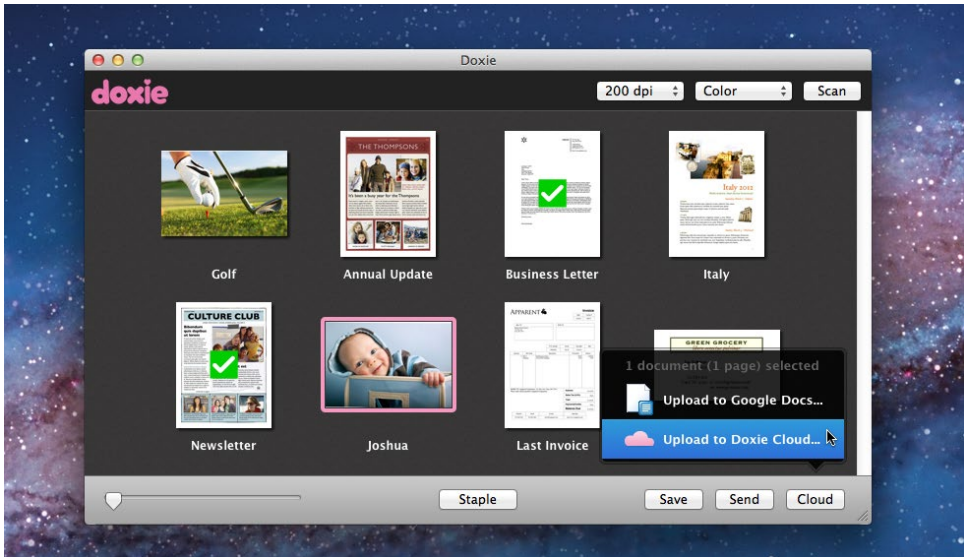
Sending to Local Apps

- Local apps are programs you use on your computer to work with documents and images, like Acrobat, Evernote, iPhoto, Preview, Windows Photo Viewer, and Photoshop.
- You can send your scan right to a local app, instead of saving it to a file. Click the Send button on the bottom bar, then select the app.
- Doxie automatically finds popular local apps for documents and images installed on your computer. You can customize the list in Preferences.



Send photos to iPhoto or Picasa so your digital and scanned photos are all in one place!

The Cloud



In addition to saving your scans to a file or local app, Doxie can also send your documents and photos directly to the cloud – that is, popular online services for digital media storage, archiving and sharing.

Doxie supports services like Google Docs and Flickr. Many cloud apps are free, while others are paid or offer premium levels of service for paying customers. Each service has its own advantages and disadvantages – explore different apps to find the ones that are right for you. Set up a cloud app, select one or more scans, then click Cloud on the bottom bar.

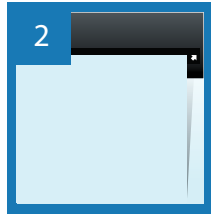
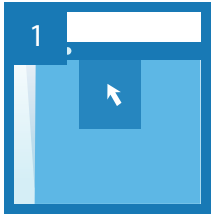
Setting Up a Cloud Account

1. Select Doxie > Preferences (Mac) or Edit > Preferences (PC), then click Cloud Apps.
2. Click the "+" button, then follow the steps to add an account. If you don't have an account with the service you want to use, sign up first at their website.

Caring for Doxie

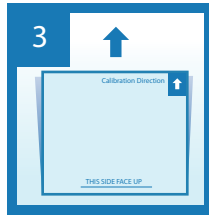
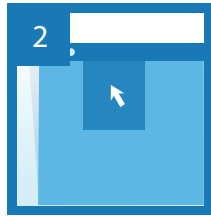
Cleaning Doxie

Doxie occasionally needs routine maintenance to perform at its best. If your scans are showing lines, black dots, or other quality issues, or if Doxie's automatic rotation and cropping doesn't seem to be working correctly, it's time to clean and calibrate your scanner.



1. Select Doxie > Clean Doxie from the menu bar.
2. Insert Doxie's cleaning sheet.
3. Push Doxie's heart button to start automatic cleaning.

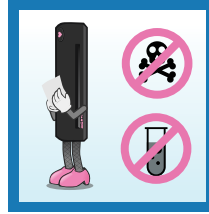
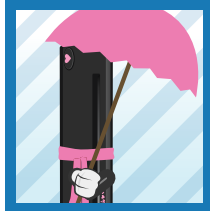
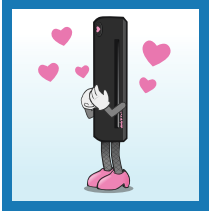
Calibrating Doxie



1. Connect Doxie directly to one of your computer's USB ports (not a hub).
2. Select Doxie > Calibrate Doxie from the menu bar.
3. Insert the calibration sheet face down. If unavailable, use a blank sheet of paper.
4. Push Doxie's heart button to start automatic calibration.

If you have more than one Doxie, you'll need to re-calibrate when switching scanners.

Physical Precautions



- Doxie doesn't like it rough. Treat Doxie with care.
- Doxie prefers temperate weather. Avoid extreme temperatures and moisture. When traveling, use Doxie's included case for easy protection.
- Use a soft, dry cloth to clean Doxie's exterior. Never use alcohol or an abrasive substance. Never scan documents with staples or adhesives.

Setting Advanced Options

Doxie's app comes pre-configured to scan documents and photos with no setup required. Select Doxie > Preferences (Mac) or Edit > Preferences (Windows) to manually adjust Doxie's settings, or to modify local and cloud apps.

⚠ USB Power & Image Quality ⚠

Always connect Doxie directly to your computer, or through a powered USB hub – that is, a hub that's also connected to an external power source. Never connect Doxie to a bus-powered hub, such as the hub that's built into some USB keyboards. Poor image quality and paper feeding issues will result if Doxie doesn't have enough power to operate, or is connected to a low quality power supply.

Tech Specs

- Color/grayscale paper scanner, up to 600 dpi resolution
- Document/photo slot with automatic page detection
- USB 2.0 connected and powered
- From business card up to 8.5x14" (includes A4 / U.S. letter and legal sizes)
- Scans at 12 seconds per page (200 dpi grayscale, U.S. letter size sheet)
- Automatic image adjustment, cropping, and rotation
- Heart button
- 11.5" wide by 1.6" tall by 2" deep
- 10.9 oz (306 g)
- FCC and CE marks; RoHS compliant

